

### STERLING

## SRA320 DGSA Semi-Automatic Bandsaw

The Sterling SRA320 DGSA is one of most popular, heavy-duty, single-ram bandsaws - well known and suited to the structural fabrication markets. They are renowned for their strength and durability built to process high tonnage. Some of the biggest structural fabrication companies in the country use these saws with great success. The Sterling brand is one of the leading brands in the metal cutting world. Reliability, dependability and high accuracy are hallmarks of Sterling bandsaws.



**SRA320  
DGSA**

### Machine Features

- Double mitring swivel head 60° left
- Sliding vice from left to right
- Simple to use control panel to control all machine functions on swivel arm
- Hydraulic cutting with variable pressure and variable down feed speed
- Variable speed
- Full-stroke Hydraulic Vice
- Auto bow height return adjustment
- Carbide blade guides for high accuracy
- Flood coolant system
- Blade tension indicator

### Optional Equipment

- Variable vice pressure
- Spray mist cooling system



**SWARF WHEEL**



**HYDRAULIC VICE**



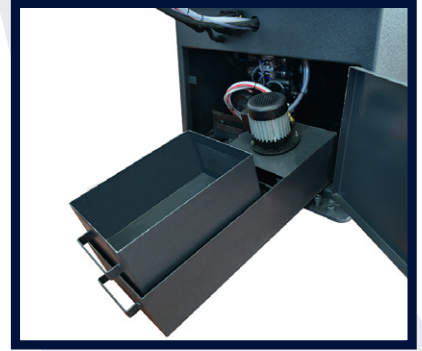
**HEIGHT ADJUSTMENT SWITCH**



**BLADE TENSION INDICATOR**



**HEAVY DUTY MOTOR & GEARBOX**



**COOLANT PUMP**



**CONTROL PANEL**

**WATCH THE  
MACHINE IN  
ACTION**



## TECHNICAL SPECIFICATIONS

MODEL	SRA320 DGSA				
STOCK CODE	15261				
Capacity		90°	30° L & R	45° L & R	60° L
<input type="radio"/>	mm	320	320	320	240
<input type="checkbox"/>	mm	320	320	320	220
<input type="checkbox"/>	mm	450 x 320	410 x 320	330 x 320	230 x 220
Bed Height	mm	860			
Blade Size	mm	4160 x 34 x 1.1			
Cutting Speed	m/min	20 - 100			
Motor	Kw	2.2			
Length	mm	2230			
Width	mm	1150			
Height	mm	1870			
Weight	Kg	1030			
Operation		Semi-Automatic			
Vice		Hydraulic			