

The Bauer Bohrmax is a 3 axis drilling head system which can drill and mill the top surface of almost any material. The machine is of a robust design with proven German engineering components and a heavy structure to suit the engineering and fabrication industry.

The machine is simple to use with very little CNC knowledge required. Data can be imported via a DXF or CSV file. Parts can be programmed quickly and simply, making it not only ideal for large quantity production but also for one-off workpieces.

This machine has been developed to be easy to use, economical and cost effective. As an option the 10 Tool Changer can be ordered to speed up production especially where the workpiece requires different sized holes and milled, tapped, countersunk or flowdrilled details.



WATCH THE
MACHINE IN
ACTION

Machine Features

- Spray mist system
- Front light barrier
- Rear access guarding
- 18" Touch screen control
- Line-by-line programming
- Data import via DXF & CSV

Optional Equipment

- Manual vice(s)
- Hydraulic vice(s)
- Support rolls
- Tool changer for 10 tools
- 7.5kw Motor required for milling purposes
- Swarf conveyor
- Software for office programming
- Alternative/additional cutting fluid systems

Metalworking
Solutions
Supplied

Bauer Bohrmax
CNC Drilling & Milling Line

SELMACHTM
MACHINERY



TEE GROOVE TABLE WITH HEAVY DUTY CLAMPS



THE CONTROL PANEL CAN BE MOVED AND SWIVELLED OUT OF THE WAY WHEN LOADING OR UNLOADING MATERIAL. SIMPLE PROGRAMMING OF THE MACHINE CAN BE DONE VIA THE TOUCH SCREEN CONTROL PANEL OR BY THE KEYBOARD.



THE DRIVE SYSTEM CONSISTS OF HEAVY DUTY LINEAR GUIDES, HARDENED AND GROUND RACK AND PINIONS DRIVEN BY SERVO GEARS AND MOTORS.

sales@selmach.com



OPTIONAL ROLLER SUPPORTS TO FACILITATE LONG WORKPIECES



MULTIPLE SMALL PARTS CAN BE PRODUCED BY
COPYING AND NESTING THE PARTS IN THE
PROGRAMMER

TECHNICAL SPECIFICATIONS

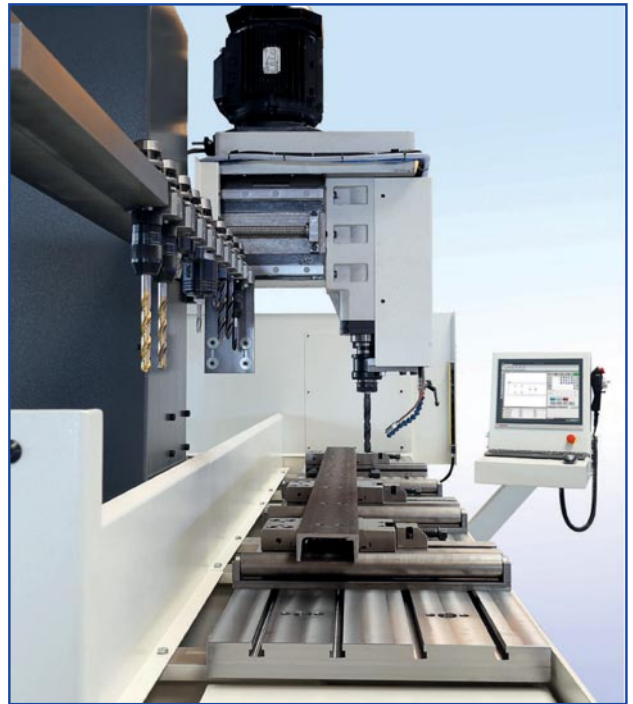
Drill Head	RPM	140-2000
Servo Motor	Axis	x + y + z axis
Rapid Traverse X Axis	m/min	20
Rapid Traverse Y Axis	m/min	20
Rapid Traverse Z Axis	m/min	20
Distance: Table Top to Chuck (Bottom Side)	mm	700
Table Width	mm	560
T-slots	mm	14
Drill Diameter	mm	3-32
Tapping Capacity	mm	>20
X Axis Tolerance	mm	0.1
Y & Z Axis Tolerance	mm	0.1
Drive Drill Head	Kw	4

MODEL	Travel X-Axis (mm)	Travel Y-Axis (mm)	Travel Z-Axis (mm)
Bohrmax Z 20	2000	580	650
Bohrmax Z 30	3000	580	650
Bohrmax Z 40	4000	580	650
Bohrmax Z 50	5000	580	650
Bohrmax Z 60	6000	580	650
Bohrmax Z 70	7000	580	650

Metalworking
Solutions
Supplied



OPTIONAL TOOL HEIGHT SETTING DEVICE

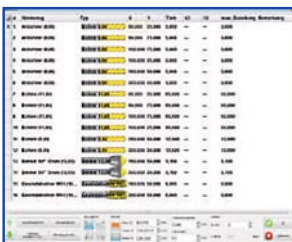


Material clamping with three vices and roller supports to facilitate material handling in the machine. Featured with moveable swivelling control panel with manual setting device and tool changer for 10 tools.

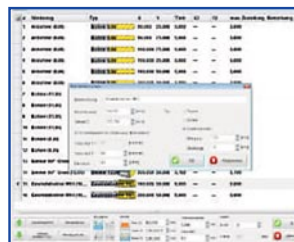


Manual control unit for easy adjustment of the zero points of the machine X, Y, Z-axis and tool magazine by a sensitive hand wheel.

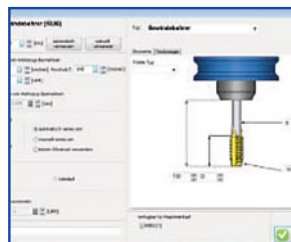
SIMPLE PROGRAMMING



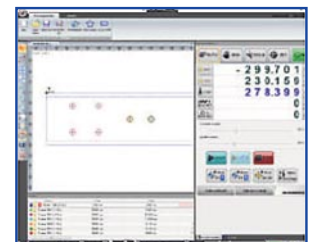
Enter the X & Y Axis Positions



Enter the tool data



Tool library



Screen shows actual position during production