



HBM Horizontal Bending Press 415v

The Morgan Rushworth HBM Horizontal Bending Press range of machines are available with capacities from 10 ton up to 100 ton. These machines have proved capable of performing a whole variety of bending applications. It is very easy to manufacture specialised tooling such as pipe bending, bar straightening and angle bending brackets and cleats. The forward and return bending stroke travel can be set with minimum travel, sufficient enough to reload the material therefore reducing cycle time.

These machines are extremely adaptable and capable of a wide range of bending applications. Speak to us about your requirements, and what tooling you would need.

**WATCH THE
MACHINE IN
ACTION**



HBM 10

Machine Features

- Built according to EC Safety Directives (CE-Mark Approved)
- Heavy duty frame
- Stroke adjustment by digital read out
- Manual or automatic working system
- All tooling and pins are induction hardened and ground
- Operation by foot pedal
- 1 set of v tooling as standard
- 1 years warranty
- Tooling height 150mm-300mm

Optional Equipment

- Cutting, punching, straightening, pipe bending tools are available

FOOT PEDAL COMPLETE WITH THREE POSITION DIGITAL READOUT:

- Actual Position
- Adjustable Forward Stroke Position to 0.1mm accuracy
- Adjustable Return Stroke Position to 0.1mm accuracy

**WATCH OUR VIDEO
ON SETTING UP
THE CONTROLLER**



FOOT PEDAL CONTROLLER



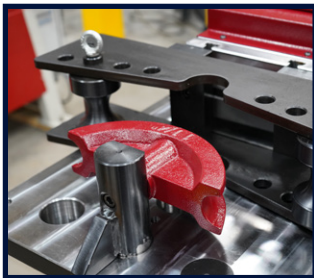
MEASURED RULE STOP



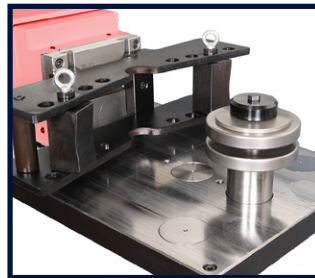
STANDARD TOOLING



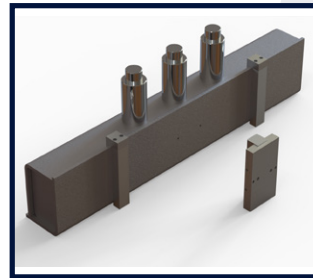
30° BOLT PUNCH



TUBE / PIPE BENDING



FLAT BAR BENDING



STRAIGHTENING TOOL



**MULTI V, V AND
RADIUS PUNCHES**

TECHNICAL SPECIFICATIONS

MODEL		HBM 10/150	HBM 20/200	HBM 30/250	HBM 40/250	HBM 50/300	HBM 80/300	HBM 100/300
STOCK CODE		M4520	M4521	M4522	M4523	M4524	M4525	M4526
Max Pressure at 200 bars	ton	10	20	30	40	50	80	100
Oil Tank Capacity	lt	12	12	40	40	60	120	120
Bending Capacity Flat Material	mm	150 x 8	200 x 12	250 x 12	250 x 24	300 x 15	300 x 20	300 x 25
Bending Capacity Round Tubes	mm	42 x 3.2	48 x 4.0	60 x 4.0	60 x 5.0	76 x 4.0	90 x 9	114 x 10
Max Stroke	mm	185	185	285	285	285	285	285
Diameter of Bolts	mm	60	80	80	80	90	105	105
Height of Toolings	mm	150	200	250	250	300	300	300
Working Speed	mm/sec	10	10	10	10	10	10	10
Return Speed	mm/sec	10	10	10	10	10	10	10
Motor Power	Kw	1.1	2.2	3	4	5.5	10	10
Net Weight	Kg	250	530	1050	1050	1450	1700	1700
Size of the Table (LxW)	mm	450 x 900	480 x 1060	660 x 1250	660 x 1250	600 x 1250	750 x 1425	750 x 1425
Working Height	mm	915	930	930	930	930	930	930
Length	mm	900	1150	1250	1250	1400	1430	1430
Width	mm	450	480	650	650	600	750	750
Height	mm	1130	1200	1250	1250	1500	1450	1450
Size of Packing (LxWxH)	mm	100 x 500 x 1500	600 x 1150 x 1700	700 x 1280 x 1750	700 x 1280 x 1750	1450 x 650 x 1800	1500 x 750 x 1800	1500 x 750 x 1800