

## STERLING

### STC SA Twin Column Semi-Automatic Bandsaw

Sterling's range of bandsaws are one of the leading brands in the metal cutting world. Reliability, dependability and high accuracy are hallmarks of Sterling bandsaws with the Sterling STC SA twin column, semi automatic, single mitre bandsaw being no exception.

These twin column saws offer strong rigidity, for accurate cutting of large material, with the largest of the range capable of cutting up to 1300x1300mm.



STC 810 SA



STC 330 SA

WATCH THE  
MACHINES  
IN ACTION





**LINEAR GUIDES**

## Machine Features

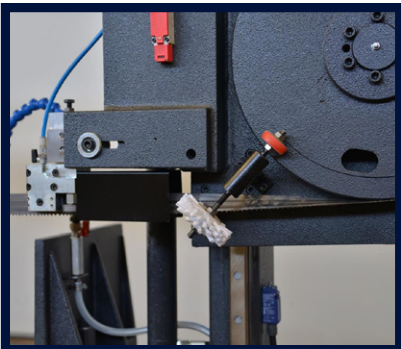
- Twin column rigidity
- Linear guidance bearing
- Inverter drive providing infinitely variable blade speed
- Material limit shaft
- Automatic bow return
- Hydraulic vice
- Hydromechanical Blade Tension indicator (**Hydraulic as standard on STC 1020 and above**)
- Carbide blade guides
- Flood Coolant system
- Variable Vice Pressure
- Optical Height Adjustment
- Heavy Duty Gearbox
- Interlocking Security Switches for CE compliance
- Chip Conveyor (**STC1110 SA and STC1313 SA only**)
- Synchronisation Moveable Arm / Vice (**STC1110 SA and STC1313 SA only**)

## Optional Equipment

- Hydraulic blade tension (Standard on STC 1020 and above)
- Hydraulic top clamps
- Chip conveyor (Standard on STC1110 SA and STC1313 SA)
- Spray mist lubrication
- Laser cutting line
- Digital bow return height
- Roller track and measuring systems
- Motorised Roller Track Segments (Infeed or Outfeed)
- High Vice (for increased stability)
- Split Vice (for increased stability)
- Double / Second Vice (for increased stability)
- Hexagonal Vice (for bundles of material)



**VARIABLE VICE PRESSURE**



**SWARF WHEEL**



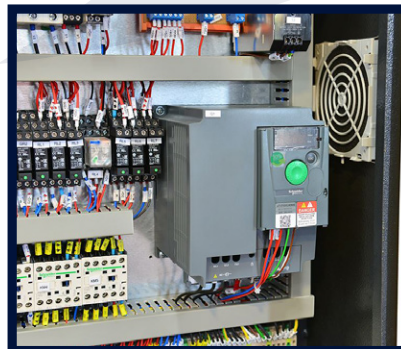
**HYDRAULIC VICE**



**CONTROL PANEL**



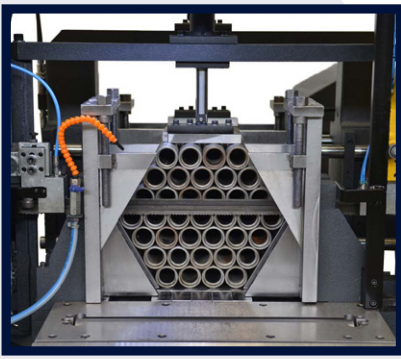
**COOLANT PUMP**



**INVERTER**



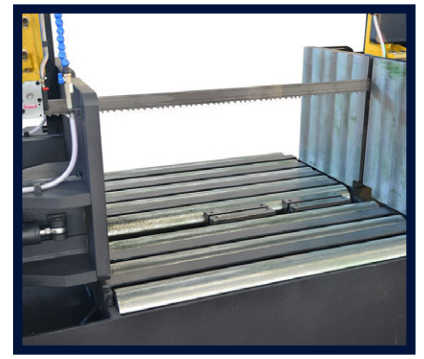
**INTERLOCKING SWITCHES**



**HEXAGONAL VICE (OPTIONAL)**



**SPLIT VICE (OPTIONAL)**



**SECOND / DOUBLE VICE (OPTIONAL)**



**HIGH VICE (OPTIONAL)**



**CHIP CONVEYOR (STANDARD ON STC1110 & STC 1313, OPTIONAL ON ALL OTHERS)**



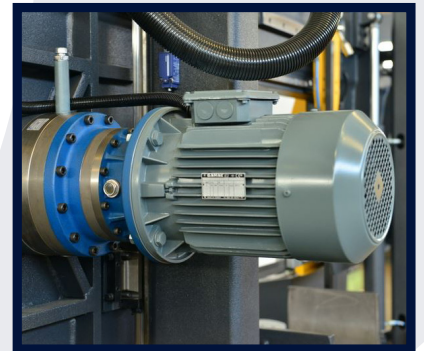
**LASER LINE (OPTIONAL)**



**SPRAY MIST COOLANT (OPTIONAL)**



**MOTORISED ROLLER TRACK (OPTIONAL)**



**HEAVY DUTY GEARBOX**

## TECHNICAL SPECIFICATIONS

MODEL	STC330 SA		STC360 SA		STC460 SA		STC560 SA		STC810 SA		STC820 SA		STC1020 SA		STC1110 SA		STC1313 SA	
STOCK CODE	15163		15151		15165		15188		15164		15166		15187		15165		15188	
Capacity	90°	45°	90°	45°	90°	45°	90°	45°	90°	45°	90°	45°	90°	45°	90°	90°		
○ mm	330	300	380	300	460	380	560	410	810	480	820	480	1020	675	1110	1300		
□ mm	330	300	380	300	460	380	560	410	810	480	820	480	1020	675	1110	1300		
▭ mm	360 x 330	330 x 380	520 x 380	300 x 380	650 x 460	380 x 460	750 x 560	410 x 560	850 x 810	480 x 810	850 x 810	480 x 820	1020 x 1020	675 x 1020	1110 x 1110	1300 x 1300		
Bed Height	mm 635		mm 590		mm 590		mm 590		mm 585		mm 585		mm 535		mm 545		mm 545	
Blade Size	mm 5000 x 34 x 1.1		mm 4800 x 34 x 1.1		mm 5200 x 41 x 1.3		mm 6000 x 41 x 1.3		mm 8200 x 41 x 1.3		mm 8200 x 54 x 1.3		mm 9500 x 54 x 1.6		mm 10500 x 67 x 1.6		mm 12100 x 67 x 1.6	
Cutting Speed	m/min 20 - 100																	
Motor	Kw 3		Kw 3		Kw 4		Kw 4		Kw 4		Kw 7.5		Kw 7.5		Kw 11		Kw 11	
Length	mm 2830		mm 2850		mm 3100		mm 3400		mm 3900		mm 3900		mm 4500		mm 4800		mm 5300	
Width	mm 920		mm 930		mm 1000		mm 1000		mm 1200		mm 1200		mm 1700		mm 1500		mm 1500	
Height	mm 1630		mm 1660		mm 1800		mm 2050		mm 2350		mm 2350		mm 2750		mm 2975		mm 3175	
Weight	Kg 1030		Kg 1330		Kg 1520		Kg 2045		Kg 3080		Kg 3424		Kg 5860		Kg 10440		Kg 11500	
Operation	Semi-Automatic																	
Vice	Hydraulic																	

# STANDARD & OPTIONAL FEATURES

The STC SA Range of saws come with a wide variety of features, some are standard for all machines, however some are depending on the models whether these are either standard fitted, or optional.

The below chart breaks down the options available for each of the saws in our Sterling range.

MODEL	STC330 SA	STC360 SA	STC460 SA	STC560 SA	STC810 SA	STC810 SA	STC1020 SA	STC1110 SA	STC1313 SA
STOCK CODE	15163	15151	15165	15188	15164	15166	15187	15165	15188
Variable Vice Pressure (Highly recommended)	Optional	Optional	Optional	Optional	Optional	Optional	Optional	Optional	Optional
1.2m Roller Track	Standard	Standard	Standard	Standard	Standard	Standard	N/A	N/A	N/A
3m Roller Track	Optional	Optional	Optional	Optional	Optional	Optional	Optional	Optional	Optional
3m Motorised Roller Track	Optional	Optional	Optional	Optional	Optional	Optional	Optional	Optional	Optional
2° Inclined Blade	Standard	Standard	Standard	Standard	Standard	Standard	N/A	N/A	N/A
Chip Conveyor									
	Optional	Optional	Optional	Optional	Optional	Optional	Optional	Standard	Standard
Double / Second Vice									
	Optional	Optional	Optional	Optional	Optional	Optional	Optional	Optional	Optional
High Vice	Optional	Optional	Optional	Optional	Optional	Optional	N/A	N/A	N/A
Split Vice									
	Optional	Optional	Optional	Optional	Optional	Optional	Optional	N/A	N/A
Moveable Arm / Vice	Standard	N/A	N/A	N/A	N/A	N/A	N/A	N/A	N/A
Synchronisation Moveable Arm/Vice	N/A	N/A	N/A	N/A	N/A	N/A	N/A	Standard	Standard
Hydro mechanical Blade Tension	Standard	Standard	Standard	Standard	Standard	Standard	N/A	N/A	N/A
Hydraulic Blade Tension	Optional	Optional	Optional	Optional	Optional	Optional	Standard	Standard	Standard
Hydraulic Top Clamping									
	Optional	Optional	Optional	Optional	Optional	Optional	Optional	Optional	Optional
Material Limit Shaft	Standard	Standard	Standard	Standard	Standard	Standard	N/A	N/A	N/A
Sensitive Pressure	Standard	Standard	Standard	Standard	Standard	Standard	Standard	Standard	Standard
Spray Mist Coolant	Optional	Optional	Optional	Optional	Optional	Optional	Optional	Optional	Optional
Turntable									
	Optional	Optional	Optional	Optional	Optional	Optional	Optional	N/A	N/A
Laser Line Pointer									
	Optional	Optional	Optional	Optional	Optional	Optional	Optional	Optional	Optional
Hexagonal Vice									
	Optional	Optional	Optional	Optional	Optional	Optional	N/A	N/A	N/A